

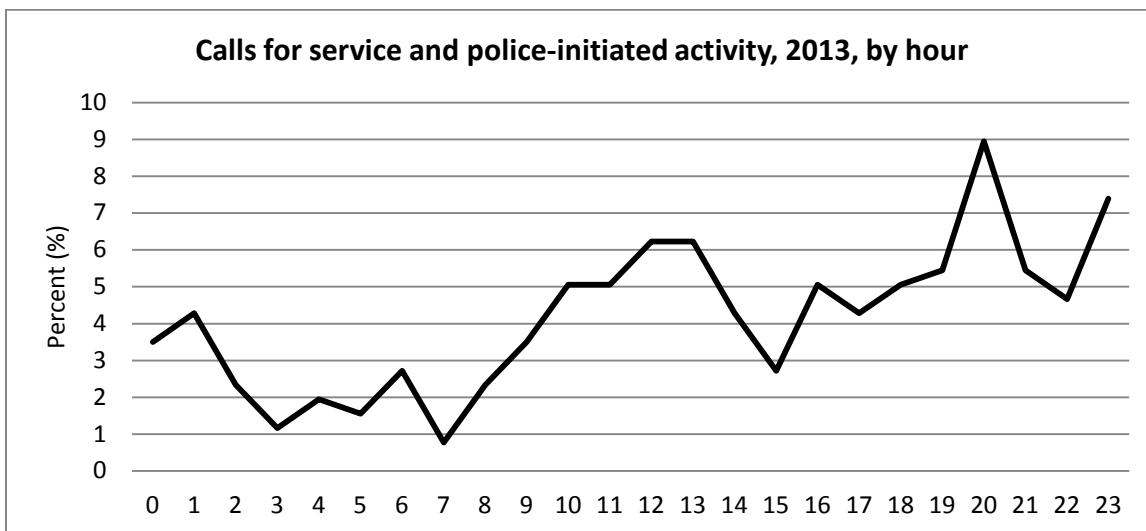
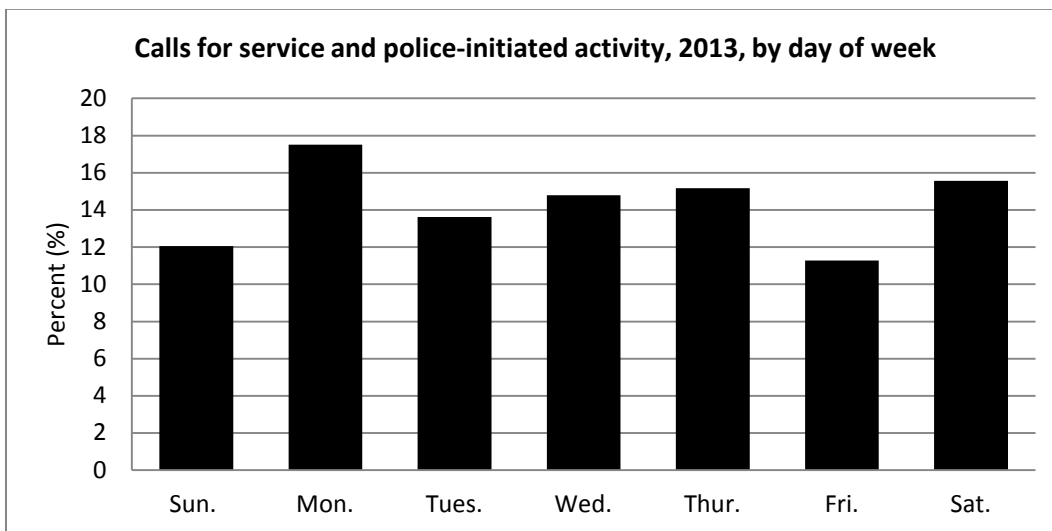
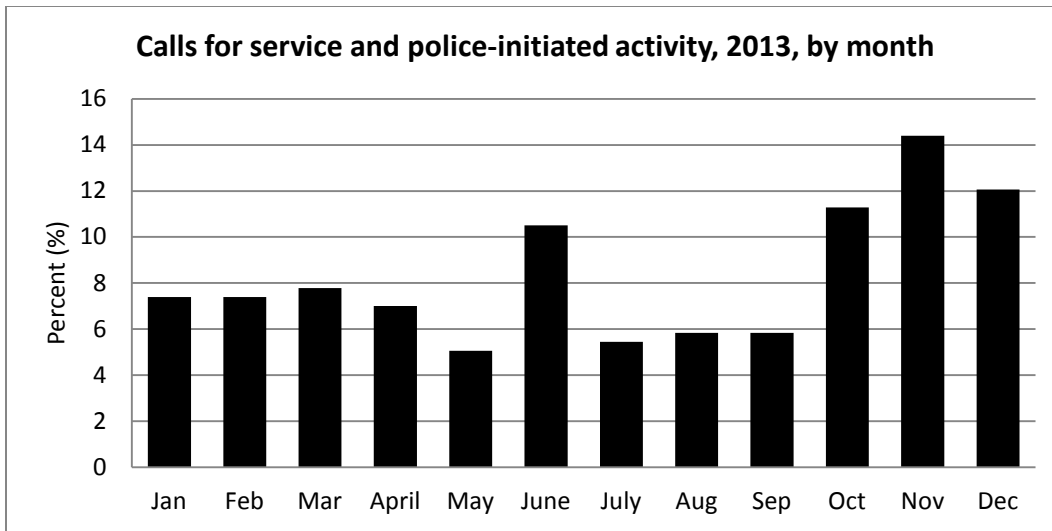
**Rose Street
2013 CAD Data Report**

The information below comes from CAD data, which has three sources:

- 911 calls by the public for emergency assistance
- In-person requests for assistance by the public
- Issues police officers notice while on duty

Calls for service and police-initiated activity, 2013

Broad Type	Broad Number	Specific Type	Specific Number	Percent
Person	24	Assaults	14	5.4
		Robbery	10	3.9
Property	63	Auto Thefts	15	5.8
		Auto Recoveries (3)		
		Theft From Car	8	3.1
		Burglary	7	2.7
		Commercial (1)		
		Residential (6)		
		Property Damage	6	2.3
		Prowler	1	0.4
		Theft	26	10.1
		Disorder	146	Disturbances
Noise Disturbance (4)				
Nuisance, Mischief (2)				
Unspecified Disturbance (63)				
Gun Calls	4			1.6
Liquor Violations	1			0.4
Mental Health Assist	11			4.3
Narcotics Complaints	7			2.7
Prostitution	3			1.2
Suspicious Circumstances	49			19.1
Threats, Harassment	2			0.8
Other	24	Fraud Calls	1	0.4
		Misdemeanors	1	0.4
		Parking Violations	1	0.4
		Persons - Lost, Found, Missing	10	3.9
		Traffic Related Calls	6	2.3
		Trespass	5	1.9
Total	257	Total	257	100.0



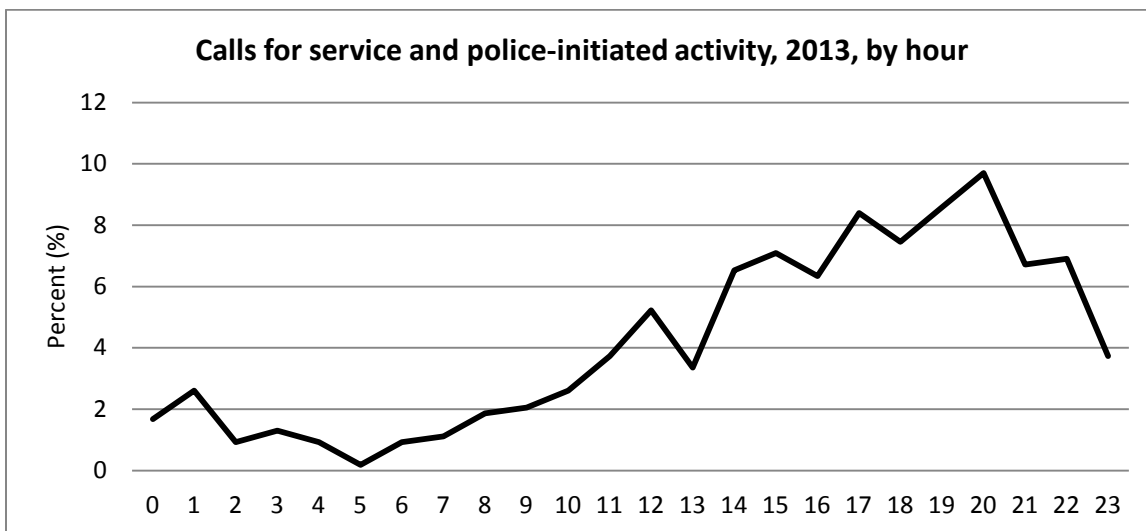
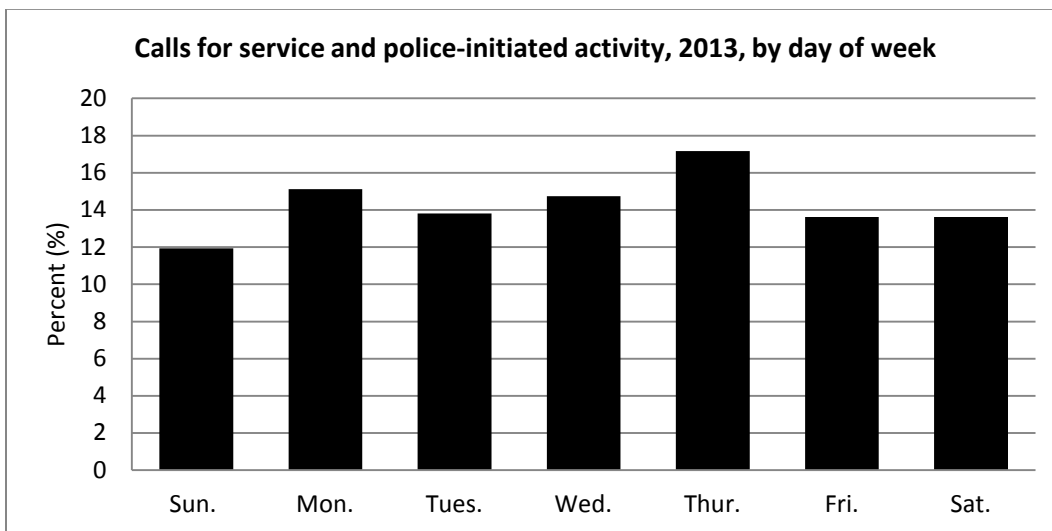
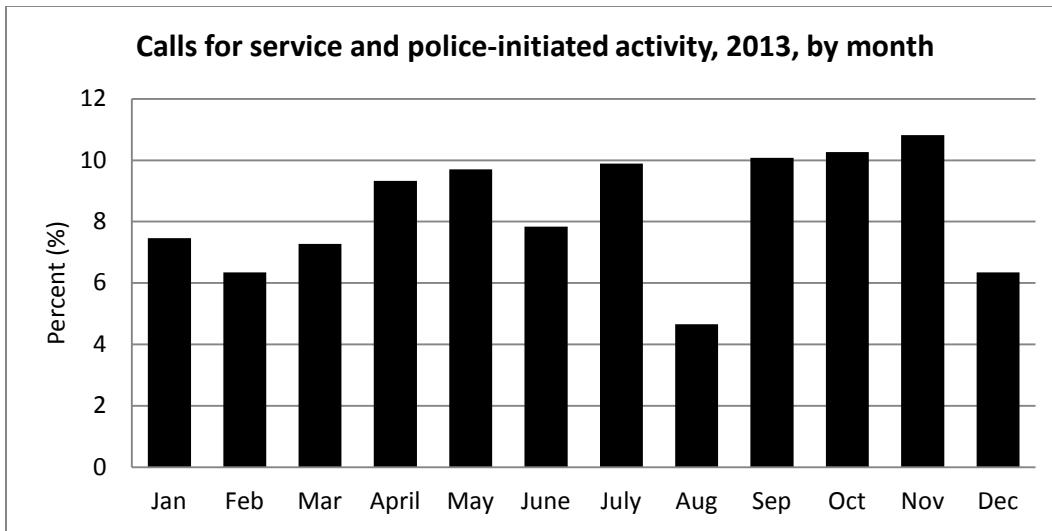
**Rainier & Henderson
2013 CAD Data Report**

The information below comes from CAD data, which has three sources:

- 911 calls by the public for emergency assistance
- In-person requests for assistance by the public
- Issues police officers notice while on duty

Calls for service and police-initiated activity, 2013

Broad Type	Broad Number	Specific Type	Specific Number	Percent
Person	48	Assaults	21	3.9
		Homicide	1	0.2
		Robbery	26	4.9
Property	112	Auto Thefts	5	0.9
		Theft From Car	11	2.1
		Burglary	4	0.7
		Commercial (1)		
		Residential (3)		
		Property Damage	8	1.5
Disorder	336	Theft	84	15.7
		Shoplifting (60)		
		Disturbances	134	25.0
		Explosions (1)		
		Noise Disturbance (4)		
		Nuisance, Mischief (11)		
		Unspecified Disturbance (118)		
		Gun Calls	11	2.1
		Liquor Violations	33	6.2
		Mental Health Assist	19	3.5
Other	40	Narcotics Complaints	3	0.6
		Prostitution	5	0.9
		Suspicious Circumstances	123	22.9
		Threats, Harassment	7	1.3
		Weapons Calls	1	0.2
Total	536	Fraud Calls	5	0.9
		Misdemeanors	2	0.4
		Persons - Lost, Found, Missing	6	1.1
Trespass	27	5.0		
Total	536	Total	536	100



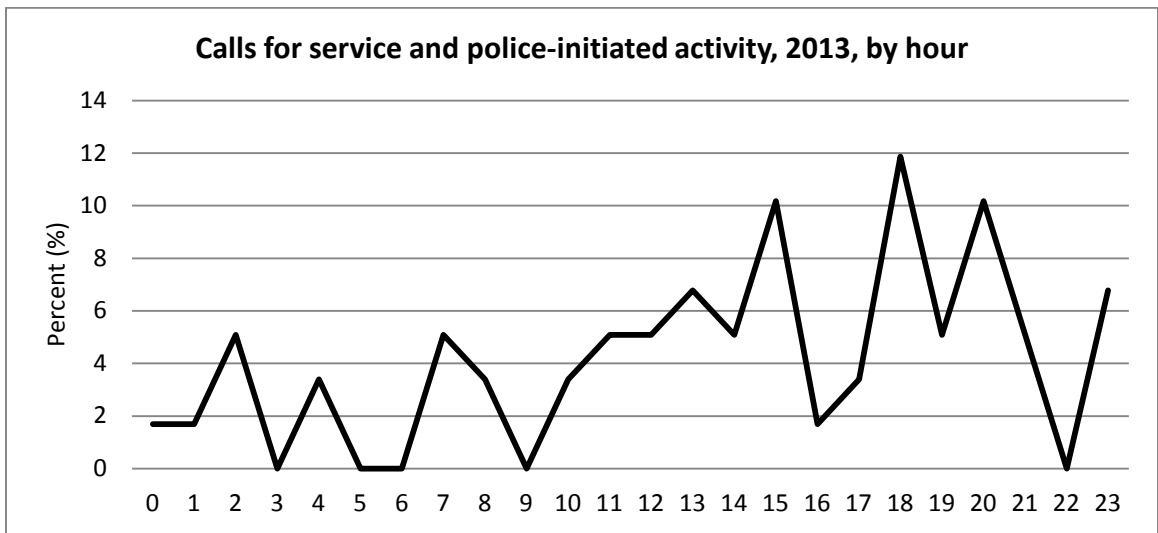
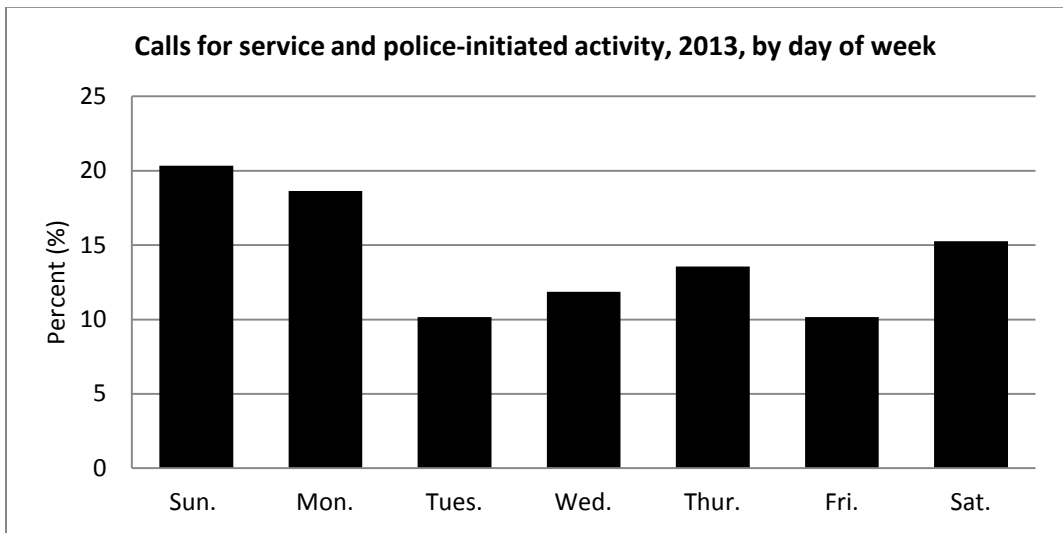
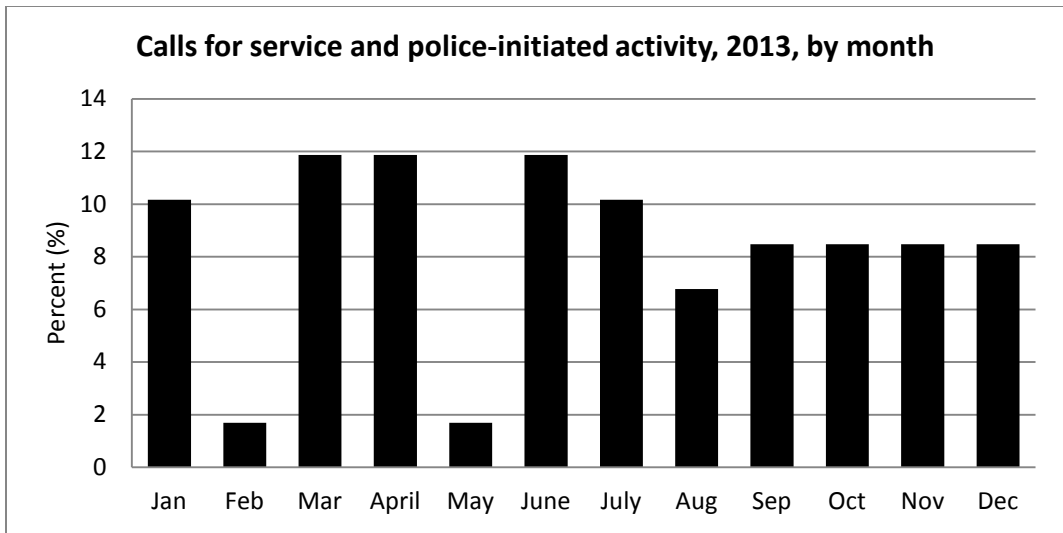
**Light Rail
2013 CAD Data Report**

The information below comes from CAD data, which has three sources:

- 911 calls by the public for emergency assistance
- In-person requests for assistance by the public
- Issues police officers notice while on duty

Calls for service and police-initiated activity, 2013

Broad Type	Broad Number	Specific Type	Specific Number	Percent
Person	3	Assaults	2	3.4
		Robbery	1	1.7
Property	9	Auto Theft (Recovered)	1	1.7
		Burglaries (Commercial)	1	1.7
		Property Damage	1	1.7
		Theft	6	10.2
		Shoplifting (1)		
Disorder	41	Disturbances	10	16.9
		Gun Calls	3	5.1
		Liquor Violations	3	5.1
		Mental Health Assist	3	5.1
		Suspicious Circumstances	21	35.6
		Threats, Harassment	1	1.7
Other	6	Fraud Calls	1	1.7
		Nuisance, Mischief		
		Complaints	1	1.7
		Persons - Lost, Found, Missing	3	5.1
		Traffic Related Calls	1	1.7
Total	59	Total	59	100



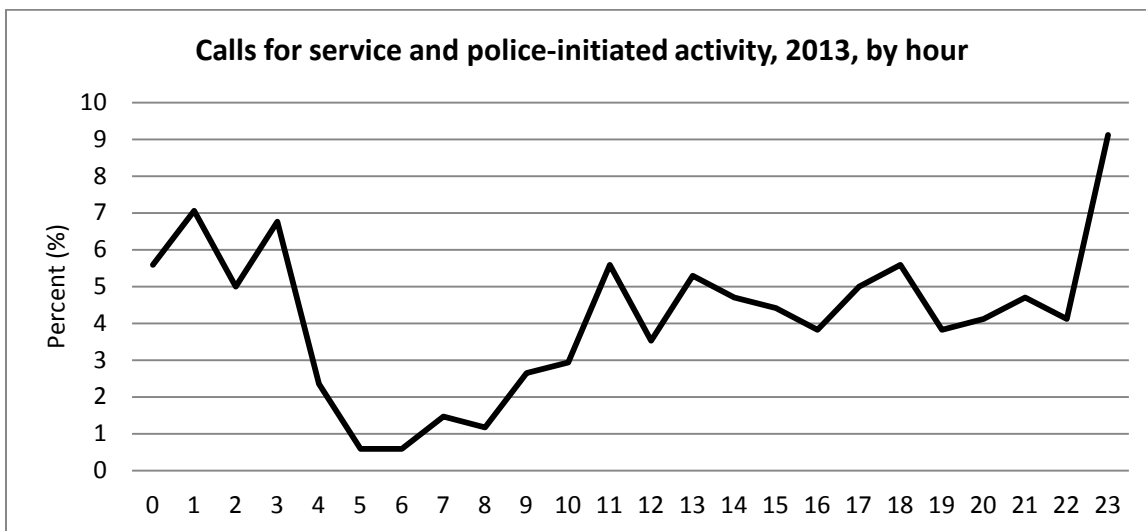
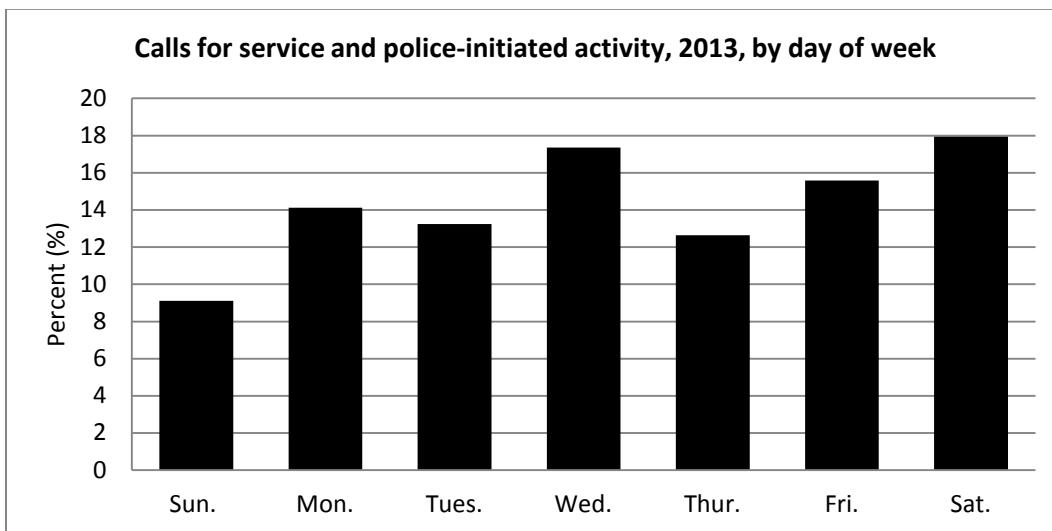
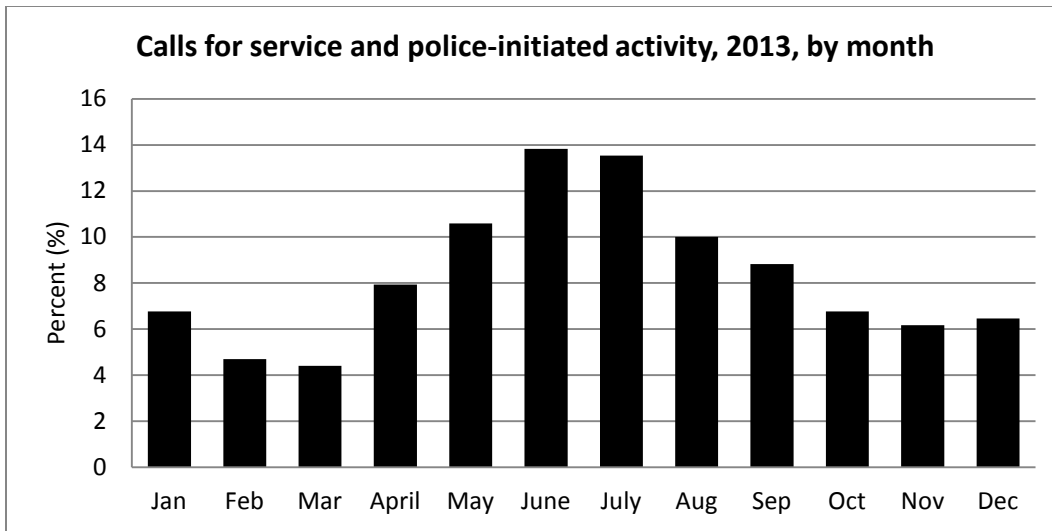
**Lake Washington
2013 CAD Data Report**

The information below comes from CAD data, which has three sources:

- 911 calls by the public for emergency assistance
- In-person requests for assistance by the public
- Issues police officers notice while on duty

Calls for service and police-initiated activity, 2013

Broad Type	Broad Number	Specific Type	Specific Number	Percent
Person	13	Assaults	11	3.2
		Robbery	2	0.6
Property	52	Arson	1	0.3
		Auto Thefts	13	3.8
		Auto Recoveries (4)		
		Theft From Car	12	3.5
		Burglaries (Residential)	3	0.9
		Property Damage	7	2.1
		Theft	16	4.7
		Disturbances	88	25.9
		Noise Disturbance (9)		
		Nuisance, Mischief (10)		
Unspecified Disturbance (69)				
Disorder	242	Gun Calls	3	0.9
		Liquor Violations	4	1.2
		Mental Health Assist	15	4.4
		Parks Exclusions	3	0.9
		Prostitution	1	0.3
		Suspicious Circumstances	94	27.6
		Threats, Harassment	10	2.9
		Trespass	24	7.1
		Fraud Calls	4	1.2
		Miscellaneous Misdemeanors	1	0.3
Other	33	Parking Violations	1	0.3
		Persons - Lost, Found, Missing	27	7.9
Total	340	Total	340	100.0



**Our Safe Way
2013 CAD Data Report**

The information below comes from CAD data, which has three sources:

- 911 calls by the public for emergency assistance
- In-person requests for assistance by the public
- Issues police officers notice while on duty

Calls for service and police-initiated activity, 2013

Broad Type	Broad Number	Specific Type	Specific Number	Percent
Person	12	Assaults	6	2.5
		Robbery	6	2.5
Property	84	Auto Thefts	3	1.3
		Auto Recoveries (1)		
		Theft From Car	6	2.5
		Burglaries (Commercial)	2	0.8
		Property Damage	3	1.3
		Theft	70	29.7
		Shoplifting (53)		
Disorder	130	Disturbances	52	19.9
		Nuisance, Mischief (5)		
		Unspecified Disturbance (47)		
		Gun Calls	9	3.8
		Liquor Violations	4	1.7
		Mental Health Assist	5	2.1
		Narcotics Complaints	2	0.8
		Suspicious Circumstances	47	19.9
		Threats, Harassment	1	0.4
		Trespass	10	4.2
Other	9	Fraud Calls	5	2.1
		Misdemeanors	1	0.4
		Persons - Lost, Found, Missing	3	1.3
Total	235	Total	235	100.0

